



ACORN

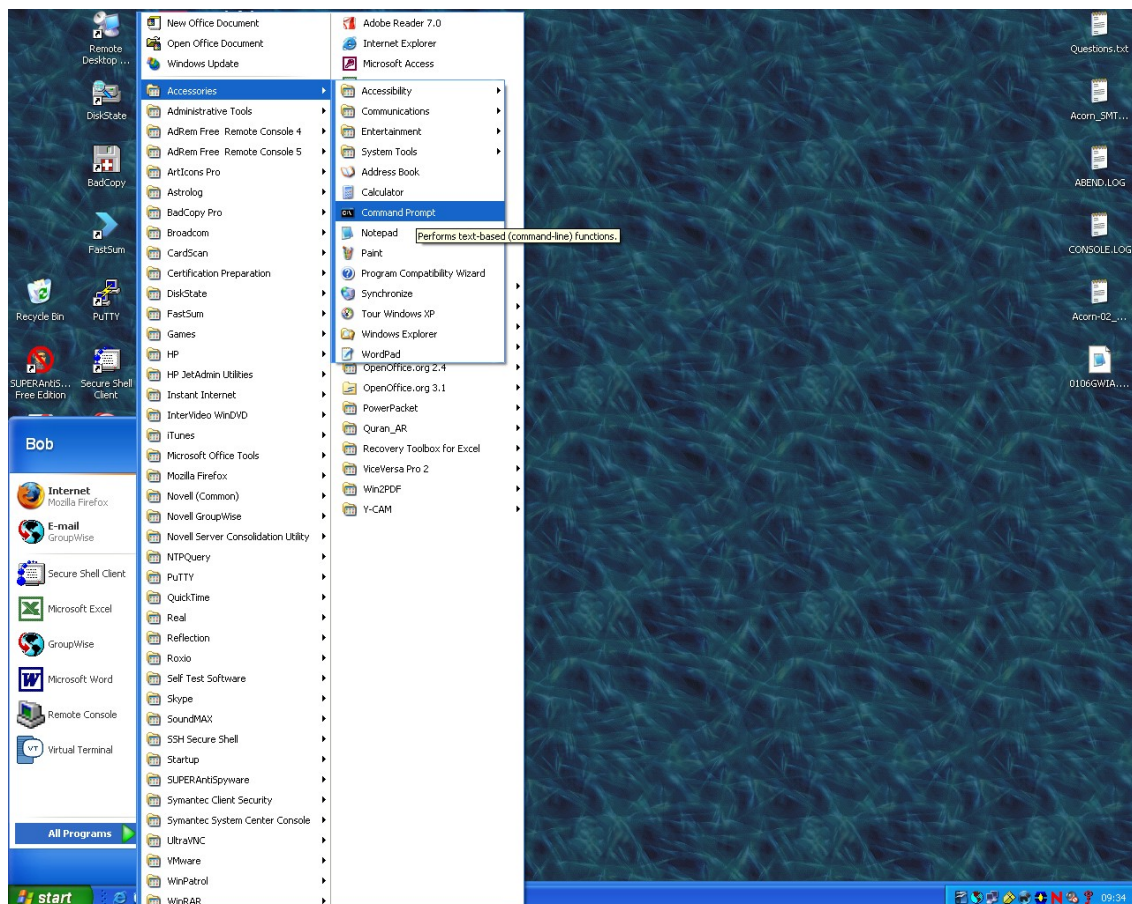
A QUICK GUIDE TO LOCATING A WIRELESS NETWORK ADAPTER'S MAC (Media Access Control) ADDRESS:

1) If the wireless adapter is detachable from the laptop then its MAC address will be printed on the back of it along with its serial number - that's the easiest way to find it!

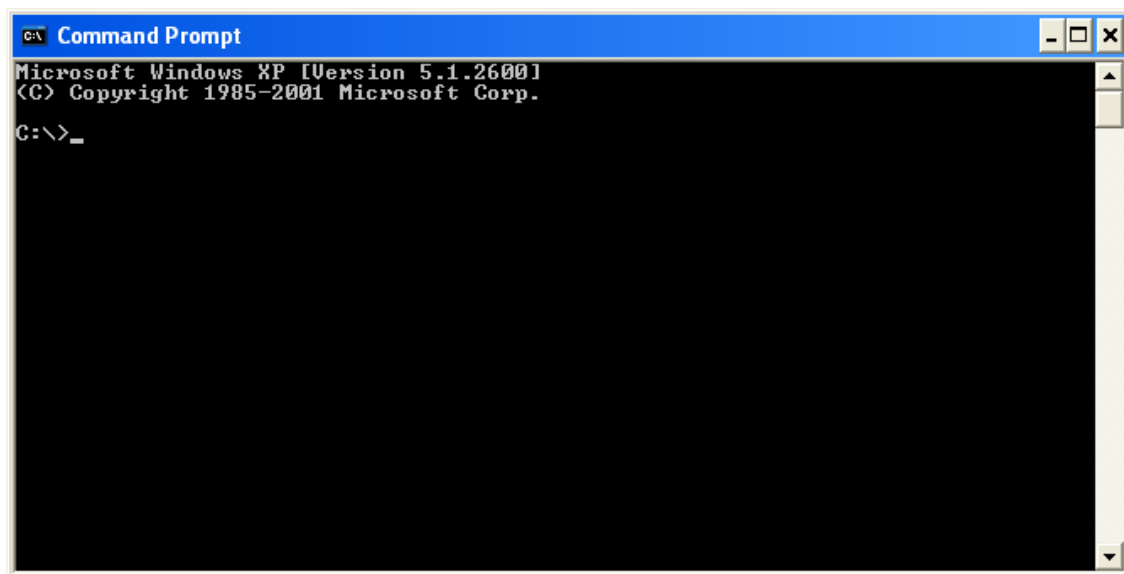
2) If, as is far more likely however, the wireless adapter is 'built-in' then the procedure for finding it is as follows:

FOR WINDOWS XP:

Bring up a 'Command Prompt' by navigating to Start > All Programs > Accessories > Command Prompt, as shown:



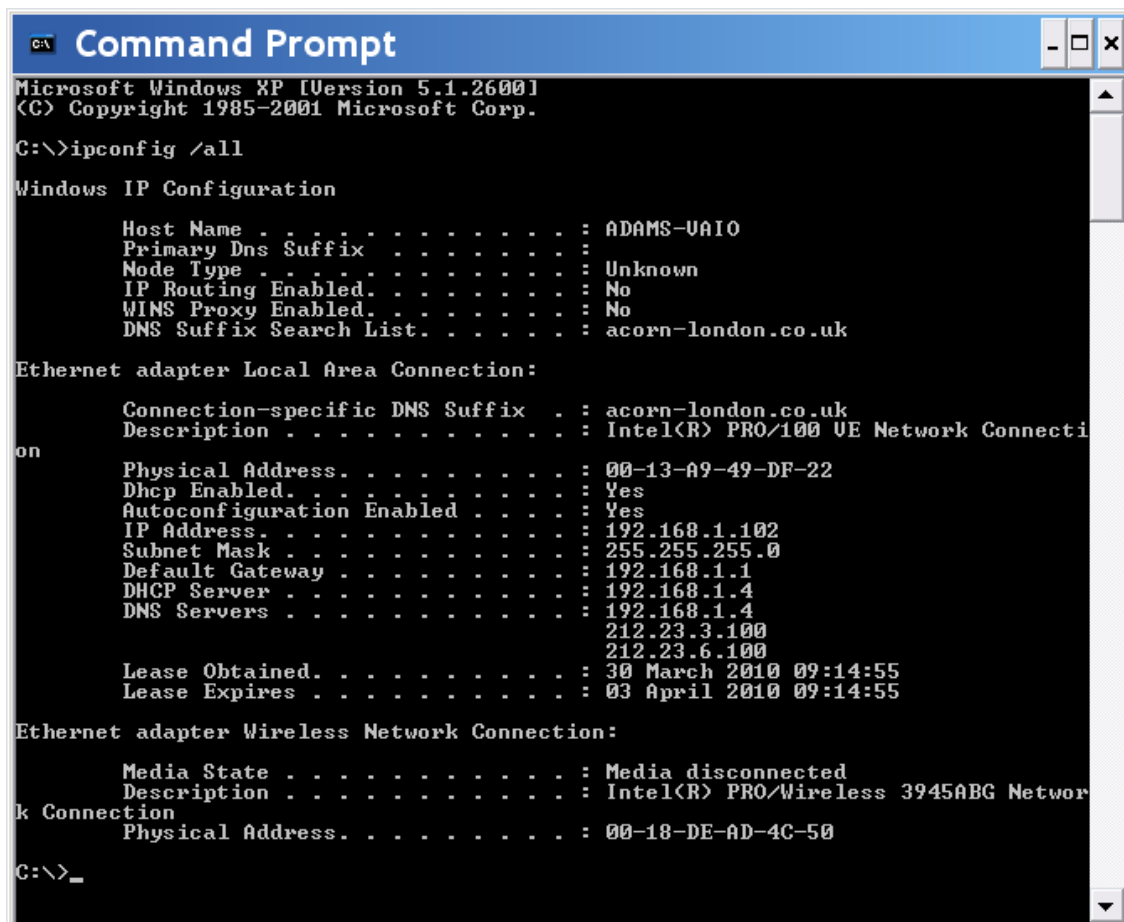
and a black box will appear as below:



```
Microsoft Windows XP [Version 5.1.2600]
(C) Copyright 1985-2001 Microsoft Corp.

C:\>_
```

At the prompt, type "**ipconfig /all**" (without the quotes) and hit enter:



```
Microsoft Windows XP [Version 5.1.2600]
(C) Copyright 1985-2001 Microsoft Corp.

C:\>ipconfig /all

Windows IP Configuration

    Host Name . . . . . : ADAMS-VAIO
    Primary Dns Suffix . . . . . :
    Node Type . . . . . : Unknown
    IP Routing Enabled. . . . . : No
    WINS Proxy Enabled. . . . . : No
    DNS Suffix Search List. . . . . : acorn-london.co.uk

Ethernet adapter Local Area Connection:

    Connection-specific DNS Suffix . : acorn-london.co.uk
    Description . . . . . : Intel(R) PRO/100 VE Network Connecti
on
    Physical Address. . . . . : 00-13-A9-49-DF-22
    Dhcp Enabled. . . . . : Yes
    Autoconfiguration Enabled . . . . . : Yes
    IP Address. . . . . : 192.168.1.102
    Subnet Mask . . . . . : 255.255.255.0
    Default Gateway . . . . . : 192.168.1.1
    DHCP Server . . . . . : 192.168.1.4
    DNS Servers . . . . . : 192.168.1.4
                          212.23.3.100
                          212.23.6.100
    Lease Obtained. . . . . : 30 March 2010 09:14:55
    Lease Expires . . . . . : 03 April 2010 09:14:55

Ethernet adapter Wireless Network Connection:

    Media State . . . . . : Media disconnected
    Description . . . . . : Intel(R) PRO/Wireless 3945ABG Networ
k Connection
    Physical Address. . . . . : 00-18-DE-AD-4C-50

C:\>_
```

The MAC address is called the “Physical Address” in the above display, **but notice that there are two!!**

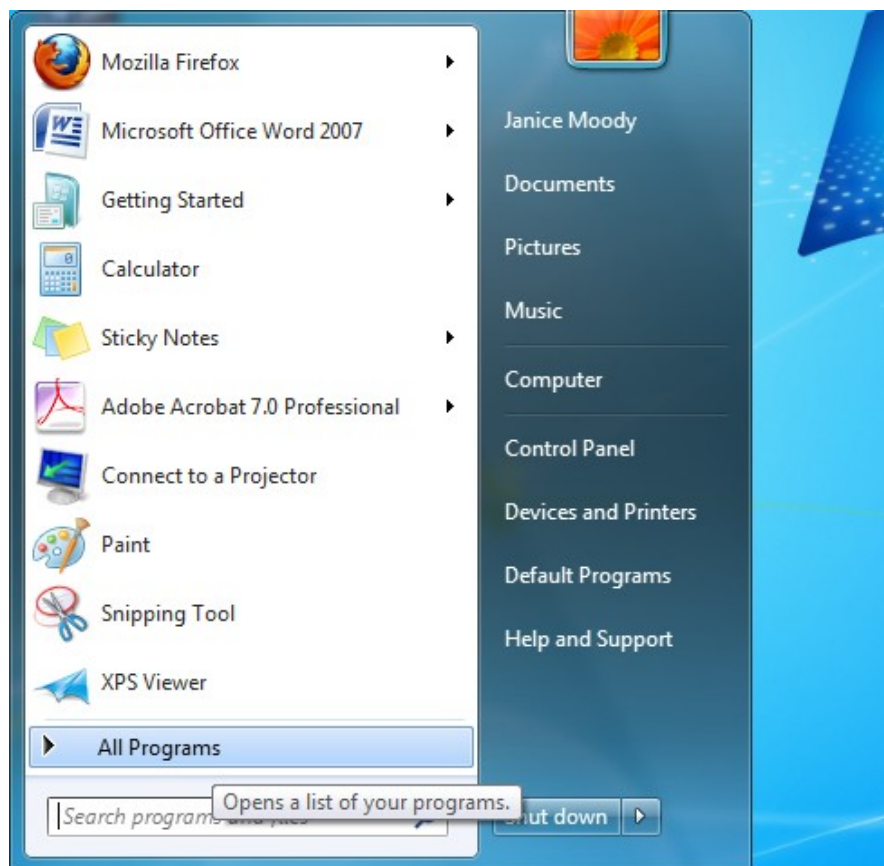
The first one is described under the heading “Ethernet adapter Local Area Connection” and the second is under the heading “Ethernet adapter Wireless Network Connection”. Please **ignore** all the information under the “Local Area Connection” heading as this is irrelevant to wireless networking. Acorn **always** needs the physical address that appears underneath the “**Wireless** Network Connection” heading, which in the above example is 00-18-DE-AD-4C-50.

Please note that the information for the Wireless Network Connection is not always displayed after that for the Local Area Connection: sometimes the information for the wireless connection is right at the top!

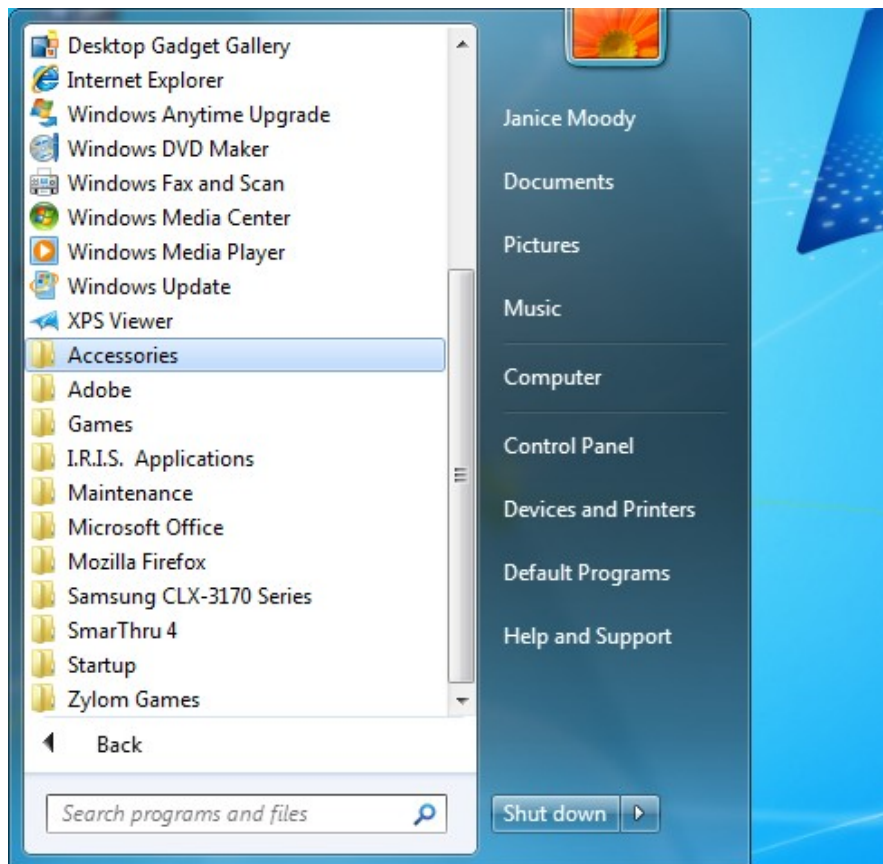
FOR WINDOWS VISTA OR WINDOWS 7:

The procedure is the same as above except that the Start Menu displays slightly differently (the following are from Windows7):

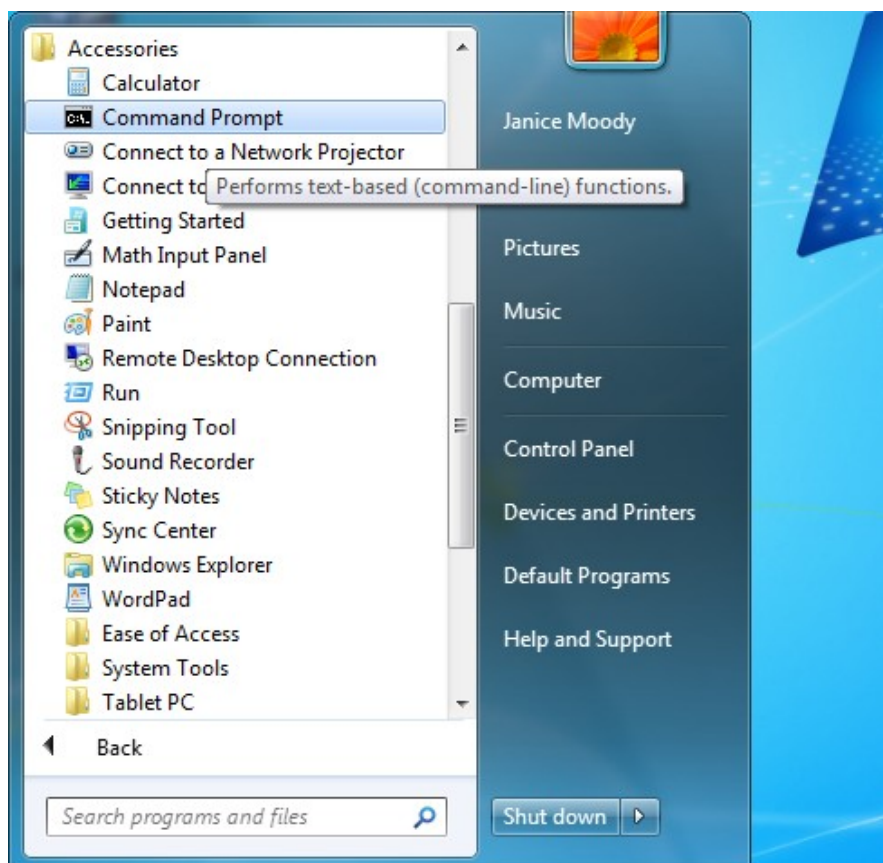
Click the ‘Flying Window’ button, then ‘All Programs’:



then ‘Accessories’:



then 'Command Prompt':



Proceed as above for Windows XP, by typing in the “**ipconfig /all**” command, but notice that *lots* more information is displayed with these versions of Windows:

```
C:\Windows\system32\cmd.exe
Autoconfiguration Enabled . . . . : Yes
Tunnel adapter Local Area Connection* 6:
    Media State . . . . . : Media disconnected
    Connection-specific DNS Suffix . . . . :
    Description . . . . . : isatap.{3120C1D8-FE66-450A-9B19-EF2F22330973}
    Physical Address. . . . . : 00-00-00-00-00-00-E0
    DHCP Enabled. . . . . : No
    Autoconfiguration Enabled . . . . : Yes
Tunnel adapter Local Area Connection* 7:
    Media State . . . . . : Media disconnected
    Connection-specific DNS Suffix . . . . :
    Description . . . . . : Teredo Tunneling Pseudo-Interface
    Physical Address. . . . . : 02-00-54-55-4E-01
    DHCP Enabled. . . . . : No
    Autoconfiguration Enabled . . . . : Yes
Tunnel adapter Local Area Connection* 13:
    Media State . . . . . : Media disconnected
    Connection-specific DNS Suffix . . . . :
    Description . . . . . : isatap.{BFBFF58F-64A2-448D-A92D-B9350D0B6E2F}
    Physical Address. . . . . : 00-00-00-00-00-00-E0
    DHCP Enabled. . . . . : No
    Autoconfiguration Enabled . . . . : Yes
C:\Users\Guest>
```

You will need to scroll up to the top of the long list that appears, as so:

```
C:\Windows\system32\cmd.exe
Microsoft Windows [Version 6.0.6002]
Copyright (c) 2006 Microsoft Corporation. All rights reserved.

C:\Users\Guest>ipconfig /all

Windows IP Configuration

    Host Name . . . . . : peplow-laptop
    Primary Dns Suffix . . . . . :
    Node Type . . . . . : Hybrid
    IP Routing Enabled. . . . . : No
    WINS Proxy Enabled. . . . . : No

Wireless LAN adapter Wireless Network Connection:

    Media State . . . . . : Media disconnected
    Connection-specific DNS Suffix . . . . :
    Description . . . . . : Dell Wireless 1395 WLAN Mini-Card
    Physical Address. . . . . : 00-23-4E-6C-9C-F1
    DHCP Enabled. . . . . : Yes
    Autoconfiguration Enabled . . . . : Yes

Ethernet adapter Local Area Connection:

    Media State . . . . . : Media disconnected
    Connection-specific DNS Suffix . . . . :
    Description . . . . . : Marvell Yukon 88E8040 PCI-E Fast Ethernet
    Controller
    Physical Address. . . . . : 00-23-AE-07-9C-EB
    DHCP Enabled. . . . . : Yes
    Autoconfiguration Enabled . . . . : Yes

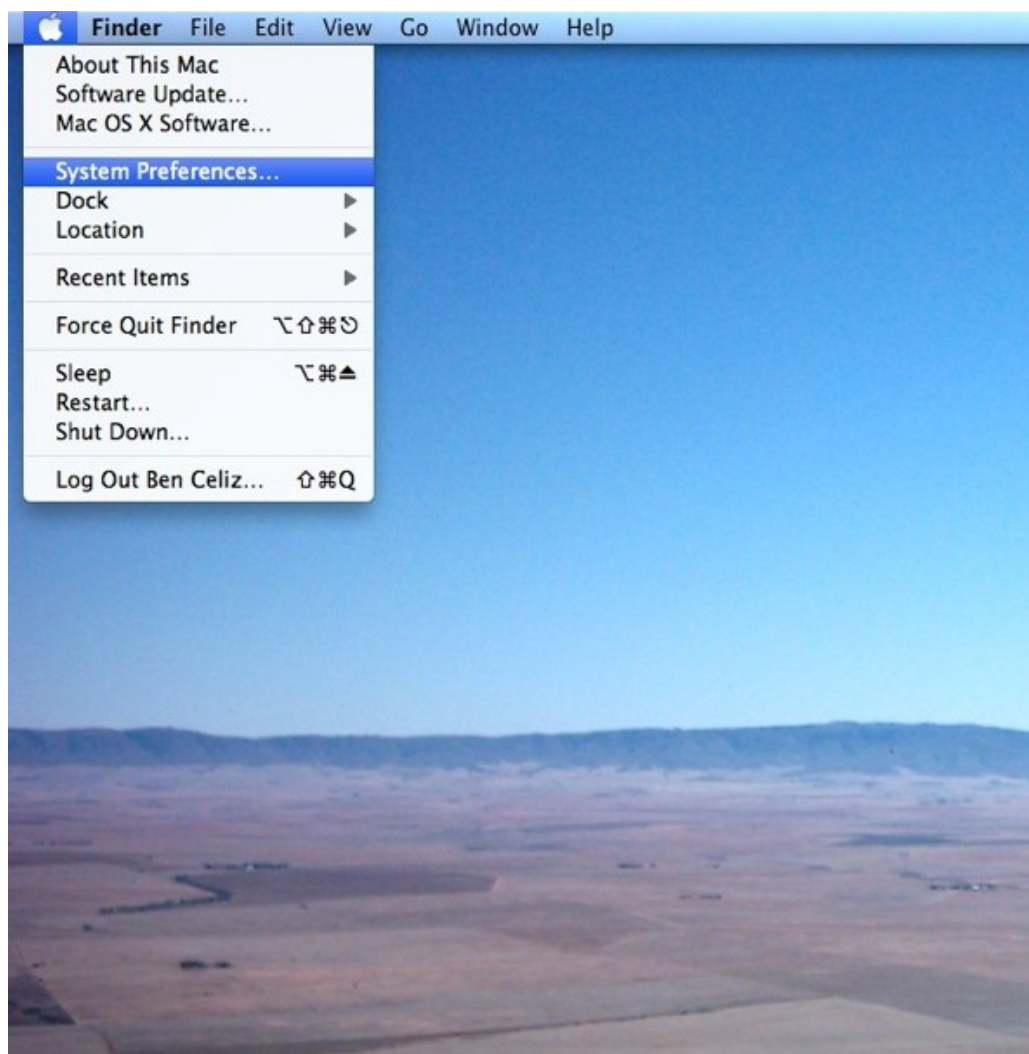
Tunnel adapter Local Area Connection* 6:
```

and look for a heading that says '**Wireless LAN Adapter** Wireless Network Connection' rather than 'Ethernet Adapter Wireless Network Connection'. In the above example the MAC address that would be needed for the Wireless Registration Form is 00-23-4E-6C-9C-F1.

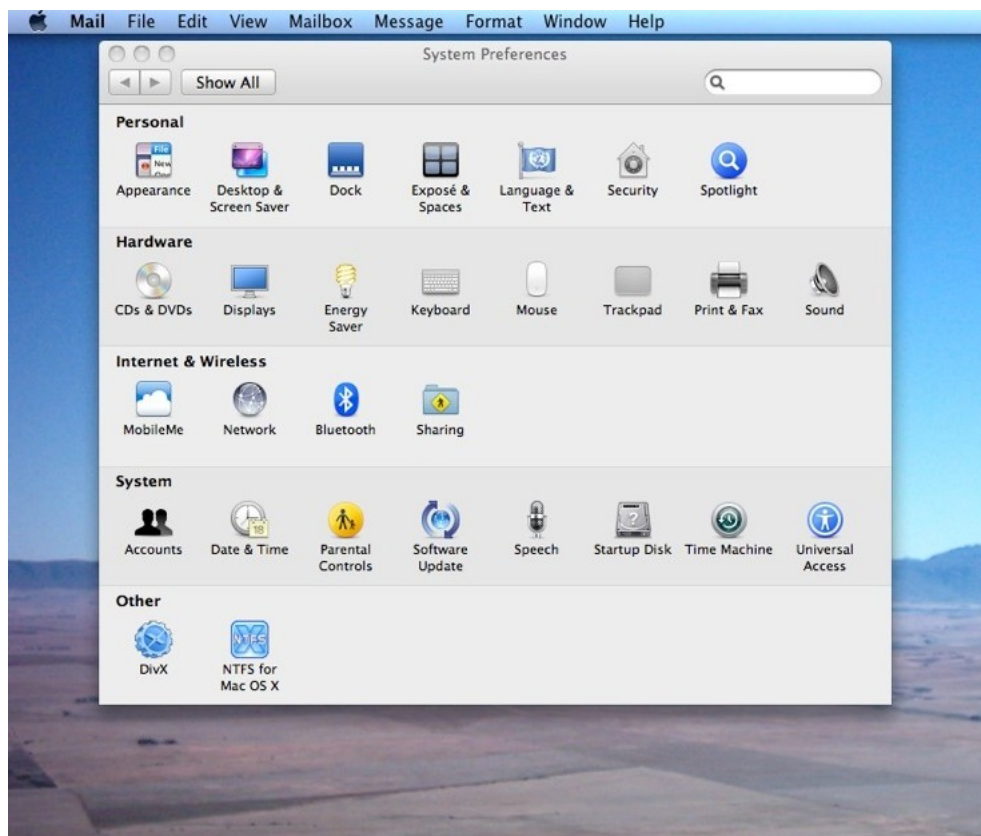
FOR APPLE Mac's:

Apple call the MAC address of the wireless adapters in their laptops the 'AirPort ID':

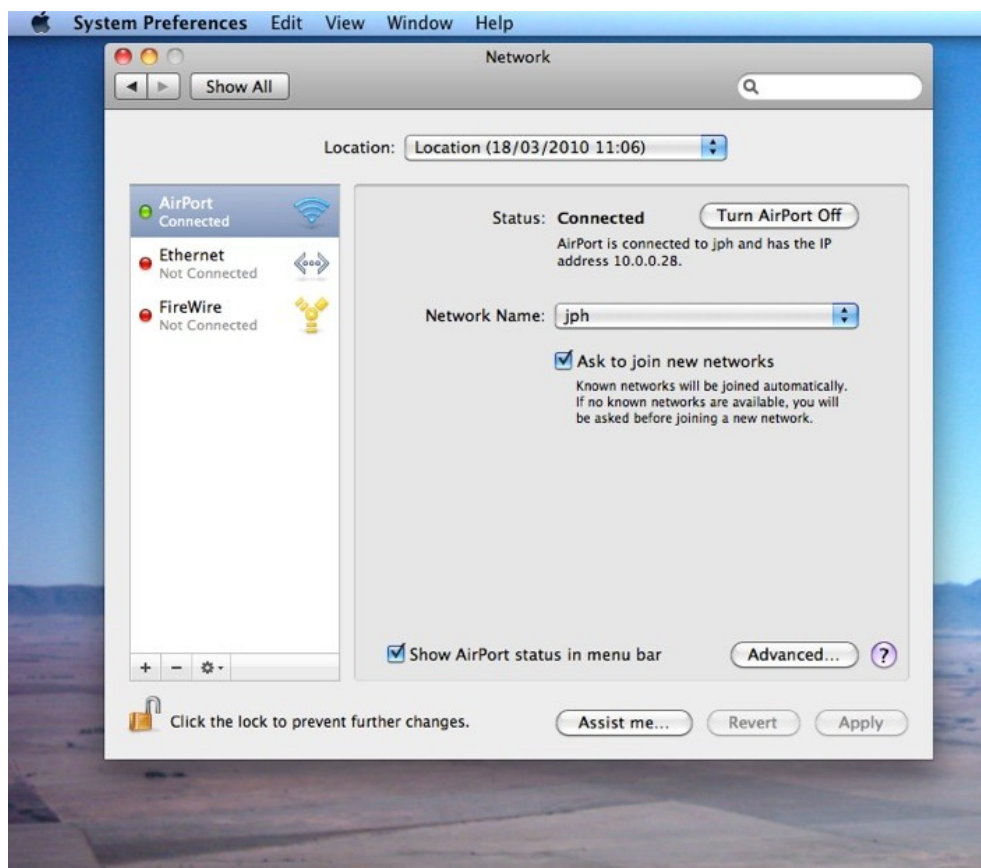
To find it, click on the Apple in the top left-hand corner of the desktop, then System Preferences:



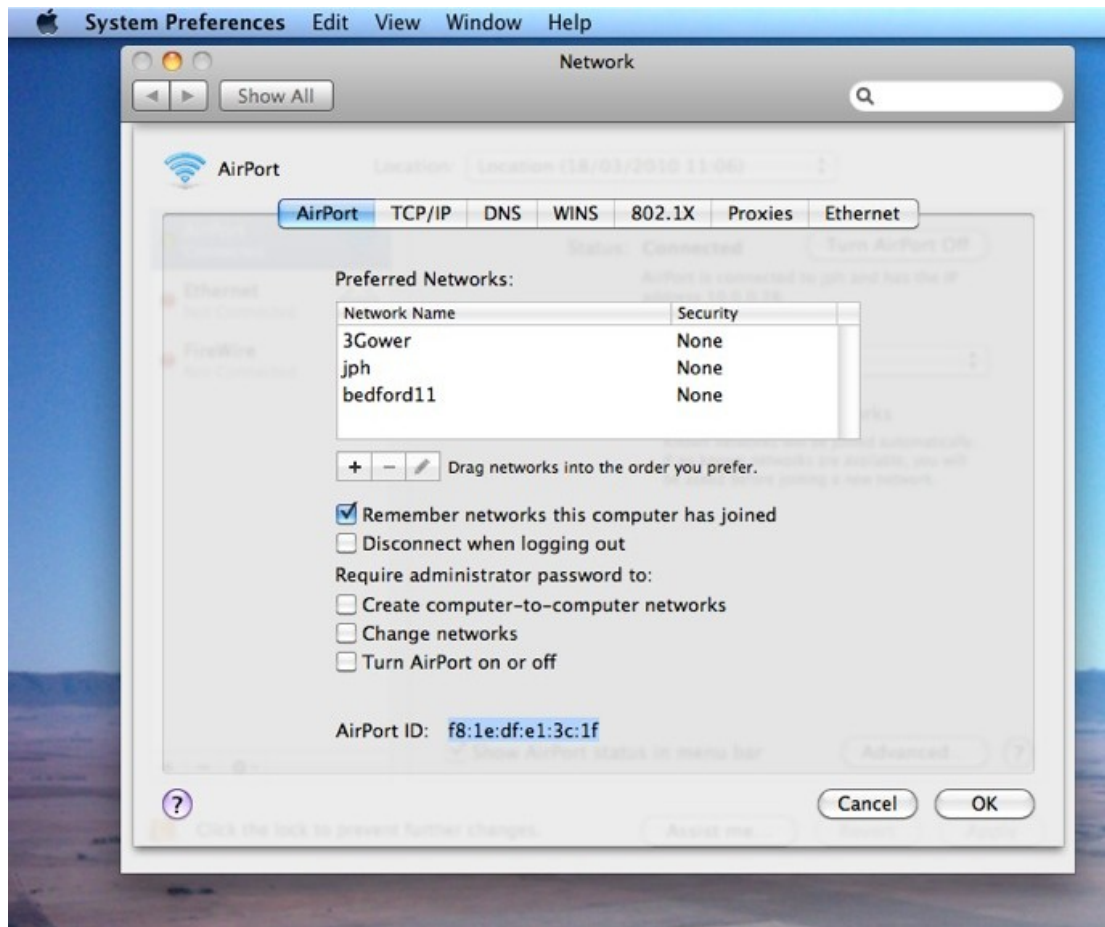
then click on the icon for 'Network' in the 'Internet and Wireless' section:



In the 'Network Preferences' dialogue box that pops up, in the list of network components down the left hand side, select 'Airport':



and then click on the 'Advanced' button in the bottom right-hand corner. The AirPort ID will be shown towards the bottom of the box that then appears:



With somewhat older Mac's the Network Preferences dialogue box looks a little different than with newer versions of the Mac OS and you will not see the list of networking components (i.e. Airport, Ethernet, FireWire, Bluetooth) on the left-hand side. Instead you will need to look in the 'Show' field and select 'AirPort' from the available drop down list. This will then display the AirPort ID that Acorn needs for your Wireless registration.

FOR IPHONES & IPODS:

The wireless adapter MAC address is called the 'Wireless ID' or the 'Wi-Fi Address' and can be found under Settings > General > About.