

Whether you are seeking a studio apartment for between one and three people or a larger apartment sleeping up to 8 people, Acorn can help find the right property to suit your needs. Both short and long term rentals can be accommodated and we offer very competitive rates.



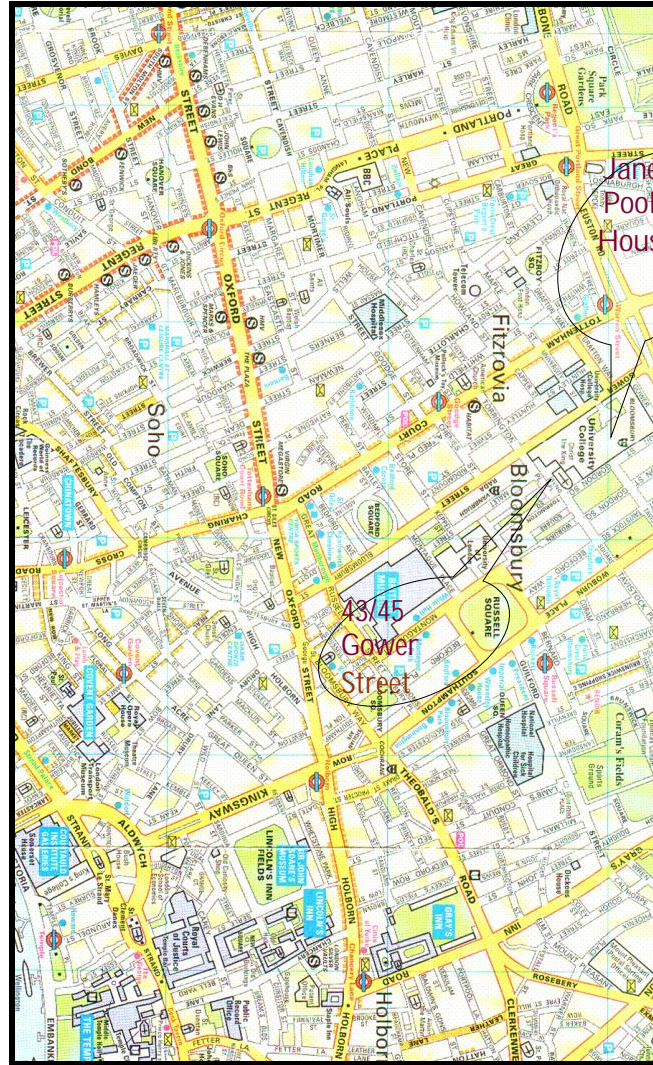
For more Information

Acorn of London  
19 Bedford Place,  
Bloomsbury,  
London, WC1B 5JA,

Telephone/Fax: +44 (0) 207 636 8325

Email: [info@acorn-london.co.uk](mailto:info@acorn-london.co.uk)

Website: [www.acorn-london.co.uk](http://www.acorn-london.co.uk)



## BLOOMSBURY APARTMENTS



Acorn of London  
19 Bedford Place  
London, WC1B 5JA

Acorn of London are a well established Property Management company offering a wide range of self-catering apartments in Bloomsbury and Farringdon, both highly desirable areas within Central London (zone 1), suited to tourists and business travellers alike.

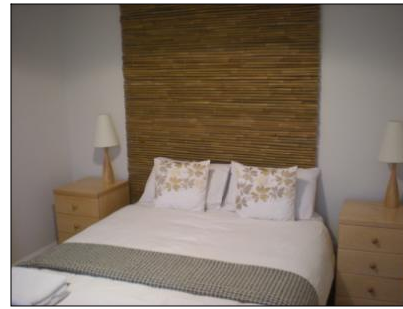


An apartment in central London is a cost-effective accommodation solution but also much more than this; it is a great opportunity for a tourist to 'live' London like a local. For corporate groups and individuals the apartments offer a comfortable base and viable alternative to a hotel room.

Features include:

- Private fully equipped kitchen
- 24 hour check-in
- Laundry facilities
- TV & direct dial telephone
- Wireless internet access available upon request

43/45 Gower Street, Bloomsbury, London



This thoroughly refurbished and charming Georgian building houses just eight exclusive apartments, each with their own floorplan and character. The apartments range in size from one bedroom with separate dressing room up to a three bedroom apartment sleeping 5 people. Sofabeds are available in some apartments to increase sleeping capacity. Each apartment benefits from private laundry facilities and are decorated to a high specification.



Location too is equally as impressive, with Oxford Street, Covent Garden and The British Museum just some of the West End attractions this property is within walking distance of.

*Janet Poole House*, 105 Gower Street, Bloomsbury, London



Also being within walking distance of the many attractions of London's West End, this Georgian townhouse comprises forty studio apartments sleeping from one to three people. A terrific option for those on a budget that do not want to compromise on location, these studios offer private kitchen and bathroom making them a very economic alternative to a hotel room. Additionally, the apartments benefit from air-cooling units. There are also a small number of basic single studios with shared facilities. Laundry facilities are available within the building at no extra cost.



Our studios at Janet Poole House represent great value and a comfortable and inviting 'home from home' in the heart of Bloomsbury.